



panoramic[®]

h-line

RETAIL PRICING

“ Each panel has a function, with infinite possibilities for personalization ”

panoramic®
h-line

The prices provided in this catalog are suggested retail prices excluding VAT. We are constantly improving and adding to our product range, and we reserve the right to modify their specifications and prices without prior notice. Despite the attention given to the production of this document, it may contain errors and omissions for which the catalog distributor cannot be held responsible. Only the final estimate is deemed as accurate. We also invite you to read the General Sales Terms and Conditions provided by the distributor of this catalog. All logos and trademarks used or mentioned on this page are the property of their respective owners and are used for display purposes only.

Pre-assembled modules



Concept



- Panoramic h-line is a trade show display system which allows you to easily create a custom booth using pre-assembled modules.
- With its full surface area completely dedicated to the graphic image, h-line creates an unparalleled visual impact while also providing a full assortment of useful functionalities.
- Panoramic h-line is a perfect solution for those that would like a booth that is both modular and flexible for purchase or rental.

Benefits



Five reasons to choose panoramic h-line

SHOWCASE YOUR IMAGE

Put the graphic image front and center! No visible aluminum profile means your message is even more effective and your booth carries **a true mark of quality.**

ENDLESS MODULARITY

All module types can be connected to one another -- no restrictions! **Rest assured that you can use your booth in every space**, even those you have yet to consider. Panoramic h-line is a completely scalable solution that grows along with your company.

FOCUS ON THE ESSENTIALS!

Each module has been designed to provide its own unique functionality (communicate, display, design, spread your message, store, and welcome customers). **You can pre-fit certain modules by adding optional kits for even more functionality.**

BE CREATIVE!

Distinguish your company by creating your own custom graphic.
Put a part of yourself in your booth!

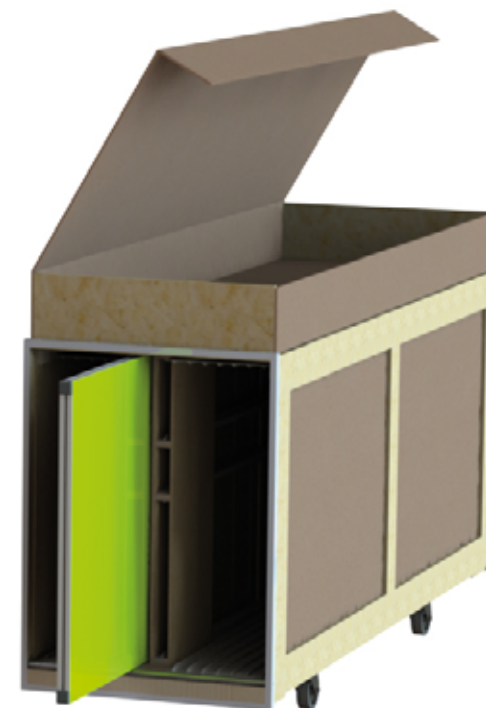
CLEVER & SIMPLE

Panoramic h-line requires **zero technical expertise** and is set-up without the use of tools. Graphics ship pre-installed on the panels. An 18m² booth can be set up by 1 person in less than 1 hour. Set up the booth by yourself, or with our assistance!

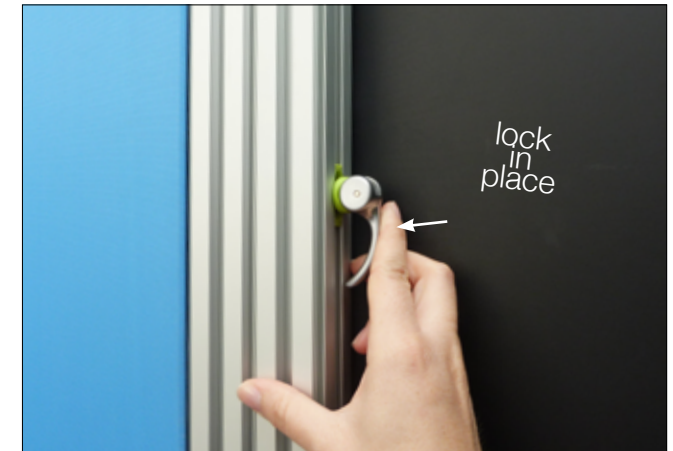
Concept



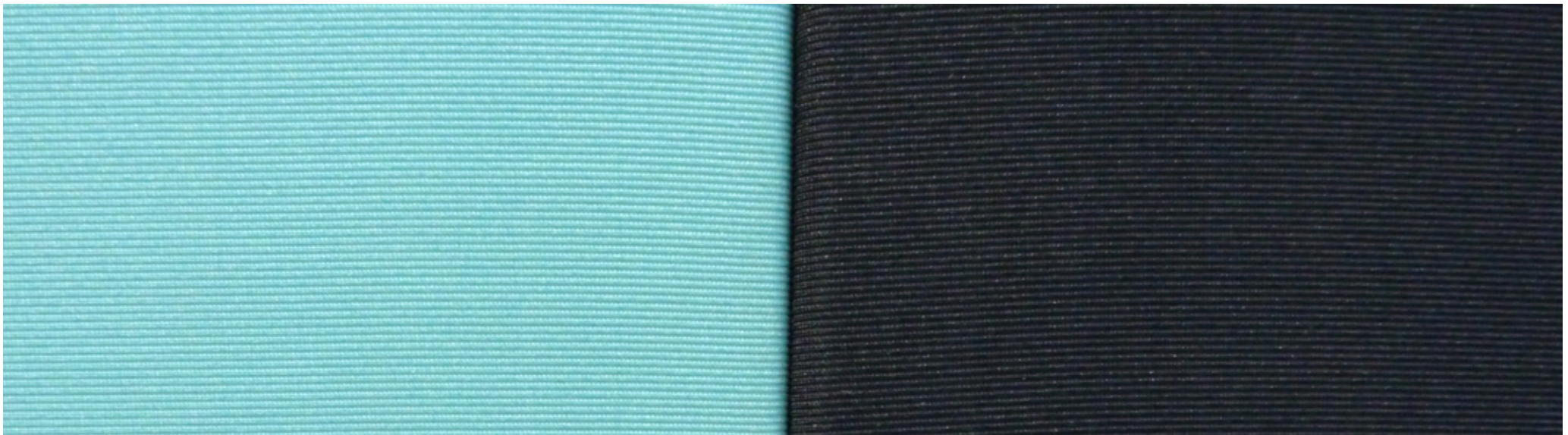
3 module sizes:
24 cm, 48 cm and 96 cm



Every panel is delivered with pre-installed graphics, just connect them!



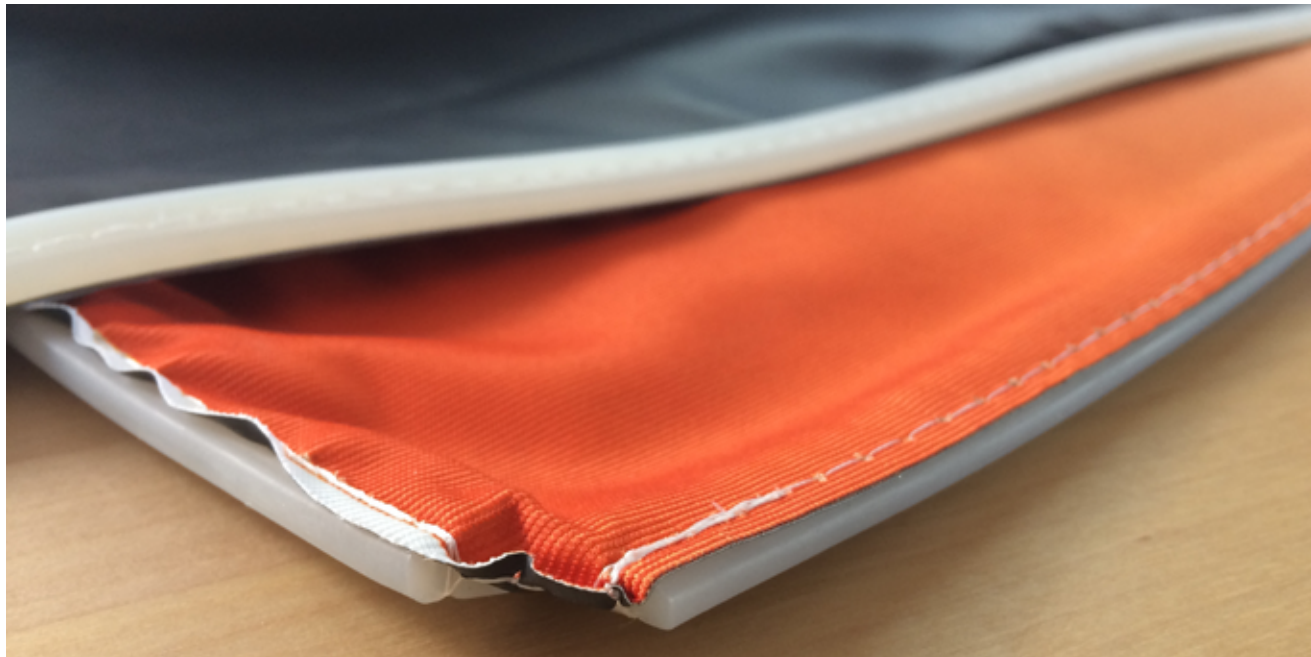
All module types can be connected to one another



Result: no visible aluminum profile !

Graphics

- Dye-sublimated fabric graphics
- Features a silicone edge attachment system, in which silicone is sewn into the edge of the graphic and is then inserted into the groove of the Panoramic profile.
- Extremely precise graphic dimensions ensure perfect graphic tension upon installation
- The right fabric for each use: opaque Panopac fabric for maximum visual impact and optimal color rendering, light-diffusing fabric for lightboxes and backlit frames
- Easy to transport and ship



Grommets provide optimal and durable cable management

Process

Design and quote your stand in 4 easy steps and 30 minutes or less!

Welcome to the panoramic®
h-line

Creating a booth has never been so simple

STEP 01

• BOOTH SIZE
 To start, choose the size and type of booth that you have rented: length, width, and number of open sides.

• MODULE CHOICE
 At a show, every sq ft counts!
 Welcome, display, store, spread your message...
 Choose and position modules according to the functionalities you need.

STEP 02

STEP 03

• GRAPHIC WRAPPING
 The most important thing at a show is to create a strong impact.
 Upload your own creations or be inspired by our selection of colors, patterns, and material effects. Creativity has no limits!

• FURNITURE/FINISHING
 The success of your booth is in the details!
 To finish of the look, we offer a line of furniture, lighting options and additional finishing touches.

STEP 04

• RENDERING

• ESTIMATE





HMS004
Angled pole*

Purchase **64 €**
Rental **19 €**

Dye-sub graphic **30 €**
Only for exterior angles**

Dimensions
80 mm x 2500 mm



HMS024
Standard module 240
+ dye-sub graphic

Purchase **281 €**
Rental* **119 €**

Dye-sub graphic **50 €**



HMS048
Standard module 480
+ dye-sub graphic

Purchase **351 €**
Rental* **175 €**

Dye-sub graphic **100 €**



HMS096
Standard module 960
+ dye-sub graphic

Purchase **501 €**
Rental* **287 €**

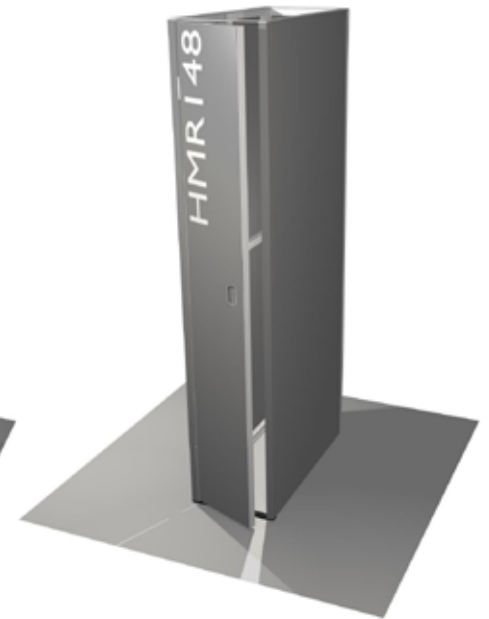
Dye-sub graphic **195 €**

** To be included in addition to the angled pole price for a complete module.

* Rental price includes custom-printed graphics.

Storage modules

pivoted
door



MODULES

HMR096

Storage module 1 m²
+ dye-sub graphics

Purchase **2 349 €**
Rental* **1 272 €**

GRAPHICS

6 dye-sub graphics **810 €**

HMR196

Storage module 2 m²
+ dye-sub graphics

Purchase **3 351 €**
Rental* **1 845 €**

8 dye-sub graphics **1 200 €**

HMR048

Small closet module
+ dye-sub graphics

Purchase **1 816 €**
Rental* **846 €**

6 dye-sub graphics **430 €**

HMR148

Medium closet module
+ dye-sub graphics

Purchase **1 994 €**
Rental* **1 032 €**

6 dye-sub graphics **620 €**

Add optional kit for your storage module

Door module



More ergonomic
and stylish
door handle

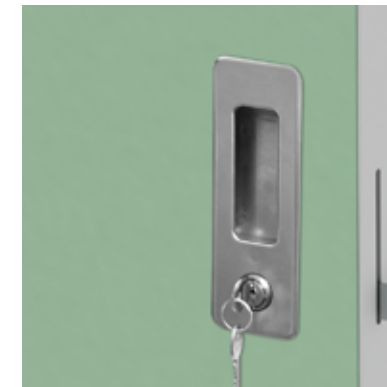
MODULE GRAPHICS

HMP096

Door module + dye-sub graphics

Purchase	863 €
Rental*	416 €

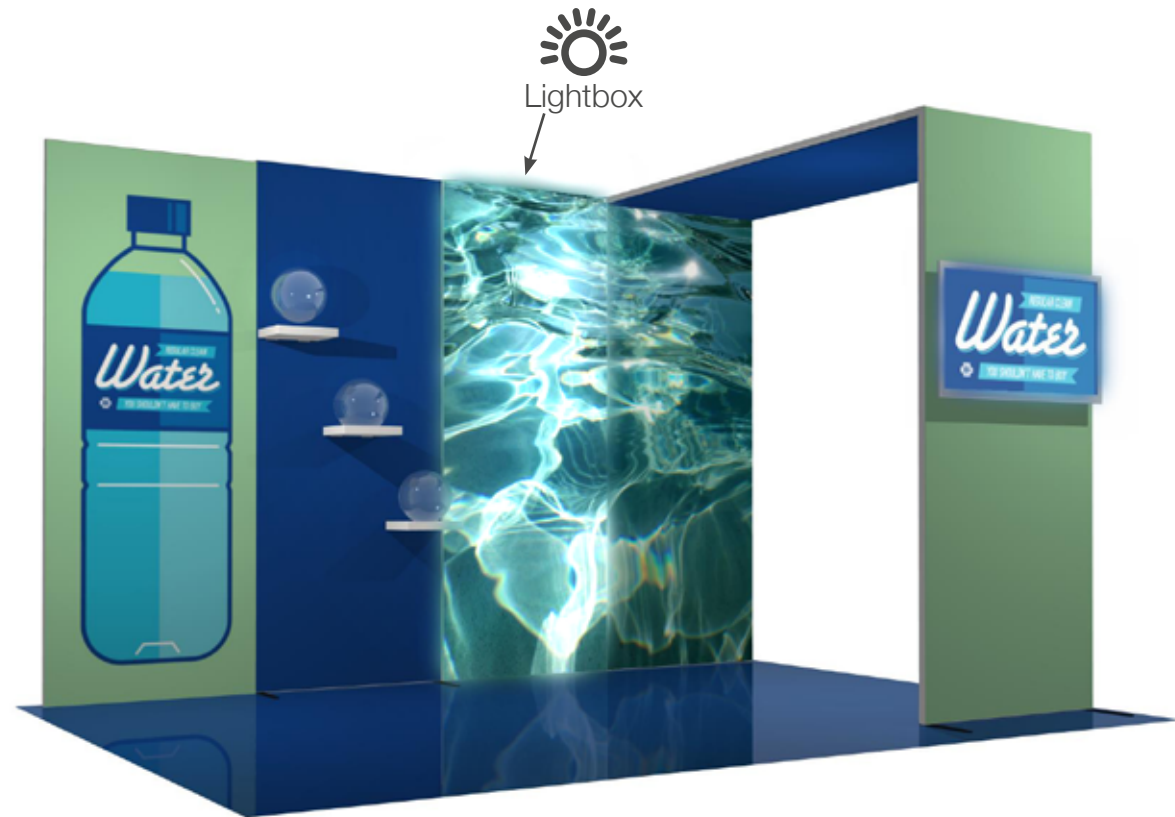
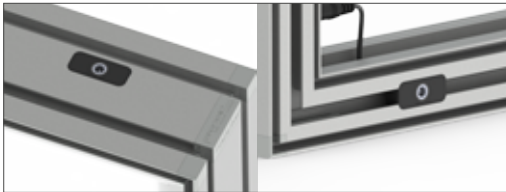
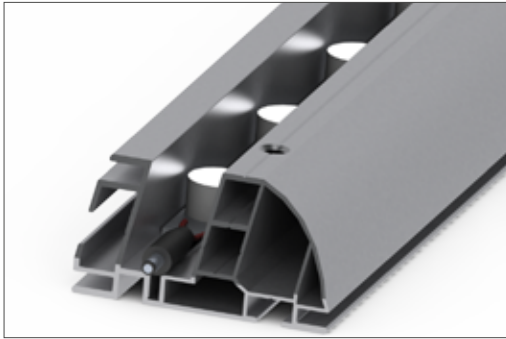
3 dye-sub graphics	225 €
--------------------	--------------



13

Standard lightbox module

Communicate



- Stand out!
- Perfect uniformity, without any light leakage
- Connects to all panoramic h-line panels
- 2 outlets on each module: no more worrying about configurations!
- Ships in the panoramic h-line crate with the graphic pre-installed




 Lightbox

MODULE

GRAPHICS

HMS096-L

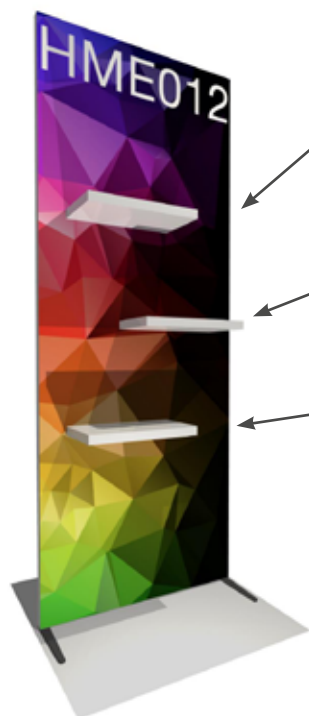
Standard lightbox module 960
+ dye-sub graphic

Purchase	1 383 €
Rental*	551 €

Dye-sub graphic	195 €
-----------------	--------------

Also available double-sided but with only one backlit side.

Display

Height:
1700 mmHeight:
1250 mmHeight:
800 mm

MODULES

HME011
3-shelf module 480
+ dye-sub graphic + 2 feet

Purchase **947 €**
Rental* **421 €**

GRAPHICS

Dye-sub graphic **195 €**

HME012
3-shelf module 480
+ dye-sub graphic + 2 feet

Purchase **947 €**
Rental* **421 €**

Dye-sub graphic **195 €**

HME013
3-shelf module 480
+ dye-sub graphic + 2 feet

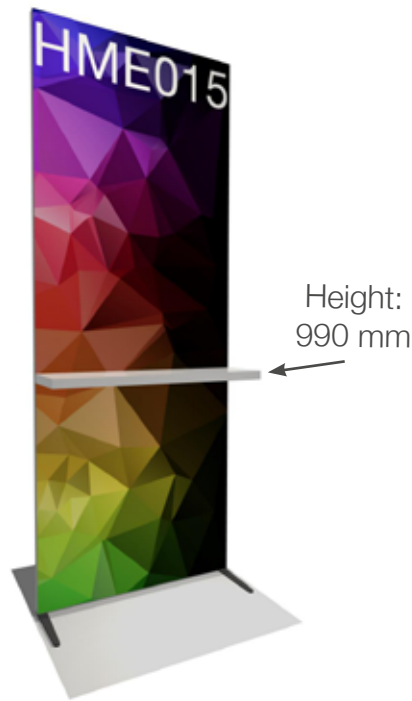
Purchase **902 €**
Rental* **407 €**

Dye-sub graphic **195 €**

HME014
3-shelf module 480
+ dye-sub graphic + 2 feet

Purchase **902 €**
Rental* **407 €**

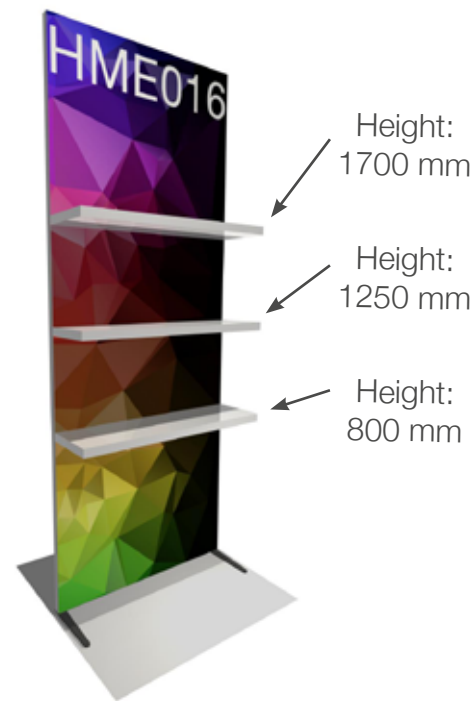
Dye-sub graphic **195 €**



HME015
1-shelf module 960
+ dye-sub graphic + 2 feet

Purchase **788 €**
Rental* **373 €**

Dye-sub graphic **195 €**



HME016
3-shelf module 960
+ dye-sub graphic + 2 feet

Purchase **1 022 €**
Rental* **443 €**

Dye-sub graphic **195 €**



HME017
1-shelf module 520 + 3 brochure
holders + dye-sub graphic + 2 feet

Purchase **988 €**
Rental* **433 €**

Dye-sub graphic **195 €**

WHITE WOOD SHELVES:

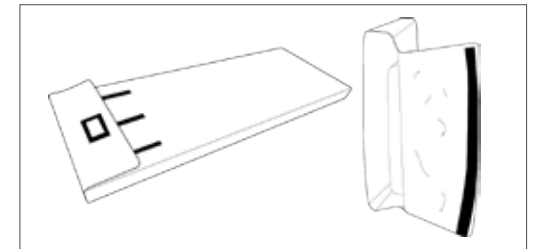
Max load: 10 kg

Dimensions:

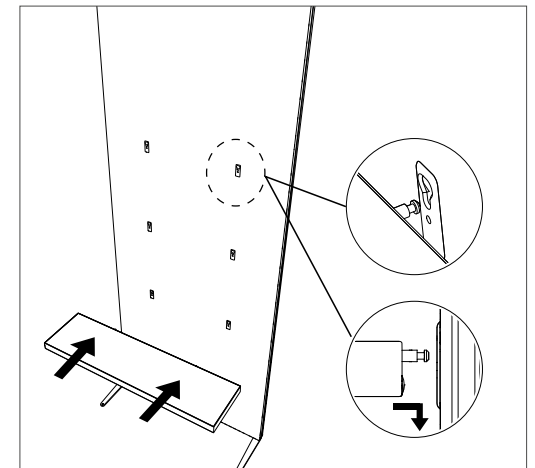
L 480 mm x D 260 mm
L 960 mm x D 260 mm

Thickness: 38mm

Standard height of shelves
from floor:
800 - 990 - 1250 - 1700 mm

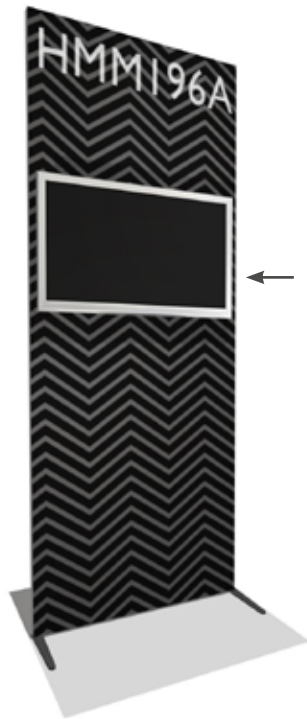


New covers to protect shelves



Attaches easily thanks to the universal attachment piece

Multimedia modules



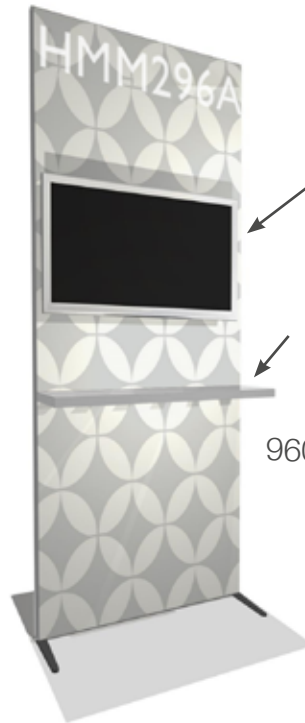
Height
at center
of screen
1600 mm

HMM196A

TV monitor* module
+ dye-sub graphic + 2 feet

Purchase **776 €**
Rental** **369 €**

Dye-sub graphic **195 €**



40" TV

Height:
990 mm

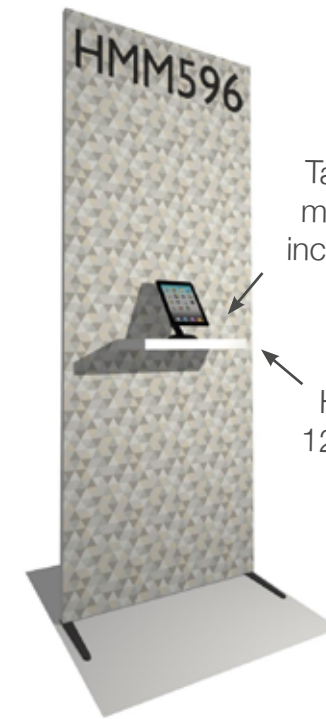
Dimensions :
960 mm x 260 mm

HMM296A

TV monitor* module + 1 960-shelf
+ dye-sub graphic + 2 feet

Purchase **893 €**
Rental** **404 €**

Dye-sub graphic **195 €**



Tablet
mount
included

Height:
1250 mm

HMM596

Tablet module*** + 1 520-shelf
+ dye-sub graphic + 2 feet

Purchase **868 €**
Rental** **397 €**

Dye-sub graphic **195 €**

MODULES

GRAPHICS

Multimedia modules



HMM596-USB

Tablet module*** + 1 520-shelf
+ USB hub + dye-sub graphic + 2 feet

Purchase **968 €**
Rental** **427 €**

Dye-sub graphic **195 €**



HMM696

TV monitor* module + 3 brochure holders
+ dye-sub graphic + 2 feet

Purchase **1 001 €**
Rental** **437 €**

Dye-sub graphic **195 €**



USB hub



Brochure holder

MODULES
GRAPHICS

Accessory modules

Create your own accessory module



HME096
Accessory module 960

Purchase **386 €**

Dye-sub graphic 96 x 250 cm

Purchase **195 €**



HMF001
Vertical accessory bar

Purchase **45 €**



CON032
Universal accessory attachment piece

Purchase **9 €**



ACS010-01
Universal attachment piece

Purchase **8 €**

For each module, you will need 1 frame
+ the necessary amount of vertical accessory bars

Number of bars

Recommended for

2

TV

3

Shelves

2

Wallframe

Accessory modules



HMF096-01
3 brochure holders module
+ dye-sub graphic + 2 feet

Purchase **806 €**
Rental** **378 €**

Dye-sub graphic **195 €**



HMF096-02
2 brochure holders module
+ dye-sub graphic + 2 feet

Purchase **791 €**
Rental** **374 €**

Dye-sub graphic **195 €**

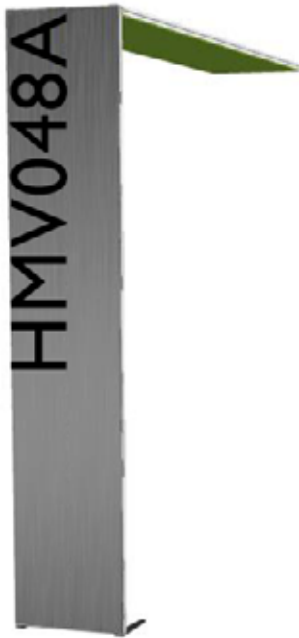


HMF196
Wallframe module + dye-sub graphic
+ 2 feet

Purchase **892 €**
Rental** **429 €**

Dye-sub graphics **231 €**

Arch modules



HMV048A

Arch module 480
+ dye-sub graphics + 2 feet

Purchase	1 012 €
Rental*	510 €

3 dye-sub graphics **295 €**

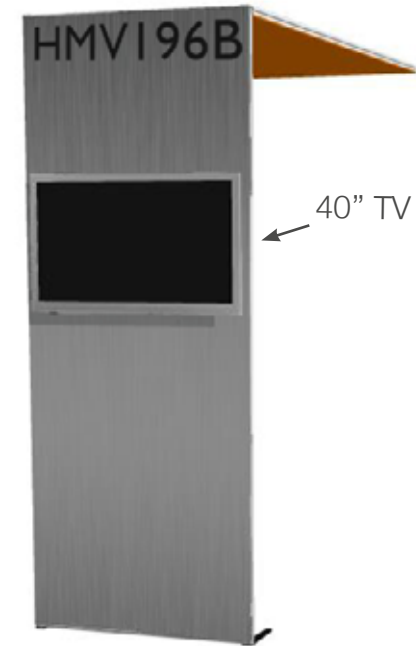


HMV096A

Arch module 960
+ dye-sub graphics + 2 feet

Purchase	1 417 €
Rental*	835 €

3 dye-sub graphics **585 €**



HMV196B

Arch module 960 + TV**
+ dye-sub graphics + 2 feet

Purchase	1 612 €
Rental*	893 €

3 dye-sub graphics **585 €**

MODULES
GRAPHICS

* Rental price includes custom-printed graphics.

**VESA monitor mount (200 x 200 / 400 x 400) with anti-theft security included in price. Recommended TV screen size: 40"
Weight: 15 kg max. Depth: 10 cm max. Optional TV not included in price.

Lightbox Arch Modules



MODULES

HMV096-L

Arch module with front** and canopy lightboxes + dye-sub graphics + 2 feet

Purchase	3 177 €
Rental*	1 363 €

3 dye-sub graphics	585 €
--------------------	--------------

HMV496-L

Arch module with canopy lightbox + dye-sub graphics + 2 feet

Purchase	2 251 €
Rental*	1 085 €

3 dye-sub graphics	585 €
--------------------	--------------

HMV596-L

Arch module with front lightbox** + dye-sub graphics + 2 feet

Purchase	2 343 €
Rental*	1 112 €

3 dye-sub graphics	585 €
--------------------	--------------

* Rental price includes custom-printed graphics.

** Module can be rotated so that the rear side is backlit.

Lightbox ships with standard connectors. To connect two lightboxes, lightbox connectors must be ordered.
Power supply bracket not included.

Be seen

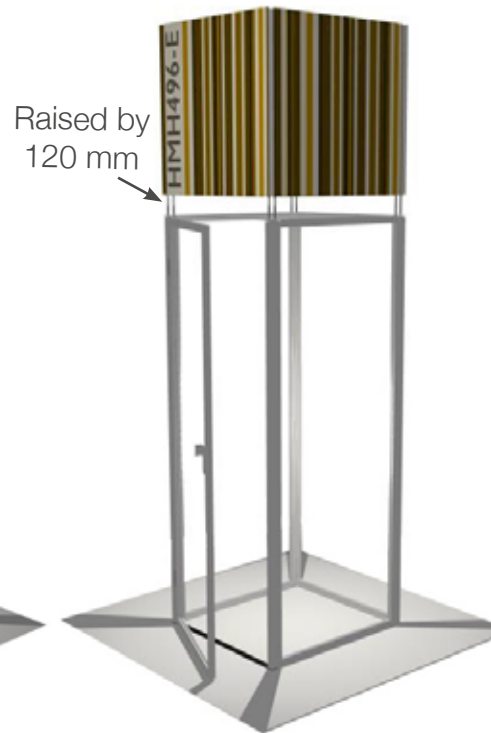


HMH496
Header module* 1 m²
+ dye-sub graphics

Purchase **1 212 €**
Rental** **574 €**

4 dye-sub graphics **300 €**

Total height
3460 mm



HMH496-E
Header module* 1 m²
+ dye-sub graphics

Purchase **1 254 €**
Rental** **586 €**

4 dye-sub graphics **300 €**

Total height
3580 mm

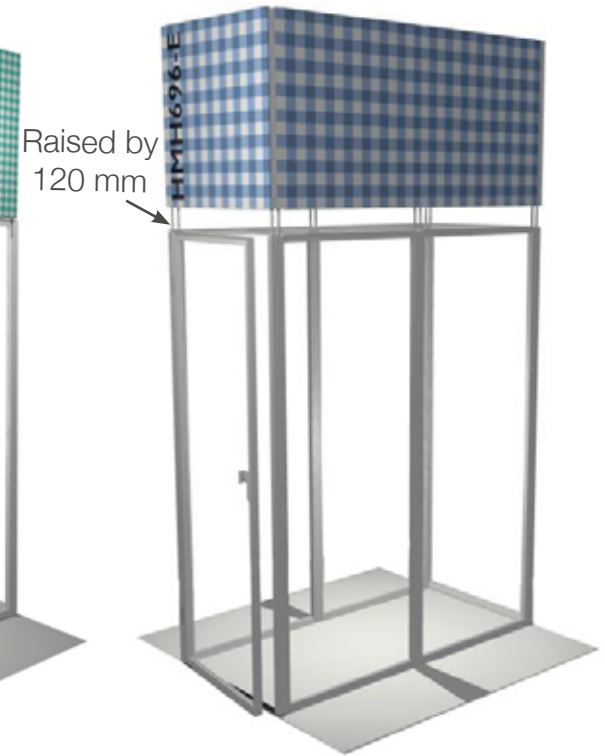


HMH696
Header module* 2 m²
+ dye-sub graphics

Purchase **1 818 €**
Rental** **860 €**

6 dye-sub graphics **450 €**

Total height
3460 mm



HMH696-E
Header module* 2 m²
+ dye-sub graphics

Purchase **1 888 €**
Rental** **881 €**

6 dye-sub graphics **450 €**

Total height
3580 mm

MODULES
GRAPHICS

Side modules

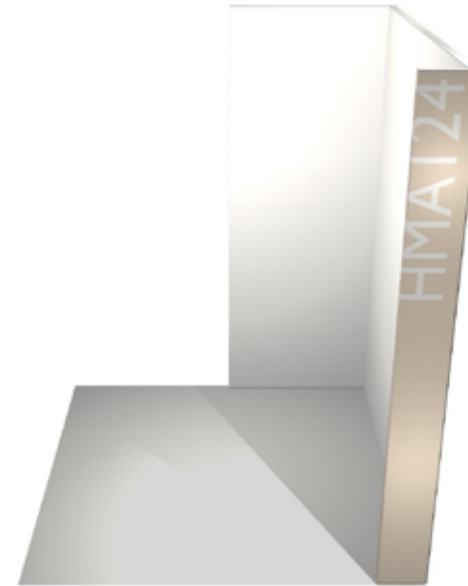
MODULES
GRAPHICS

HMA024

Left side aisle sign** + dye-sub graphics

Purchase	353 €
Rental*	176 €

2 dye-sub graphics	100 €
--------------------	--------------



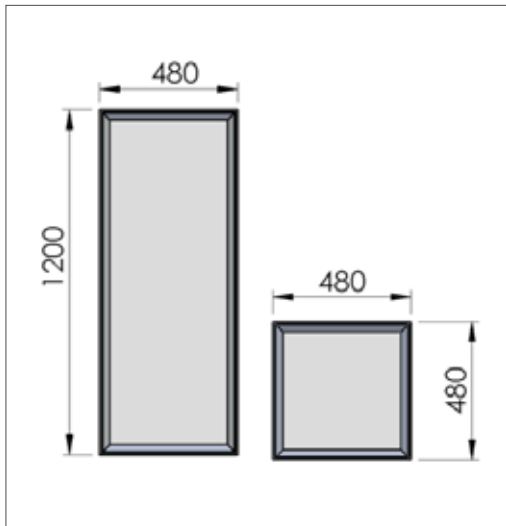
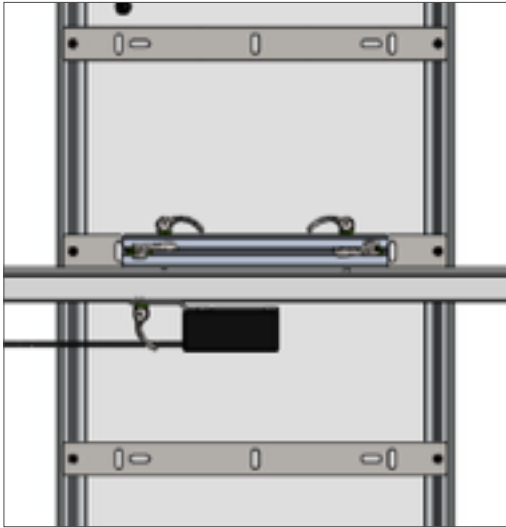
HMA124

Right side aisle sign** + dye-sub graphics

Purchase	353 €
Rental*	176 €

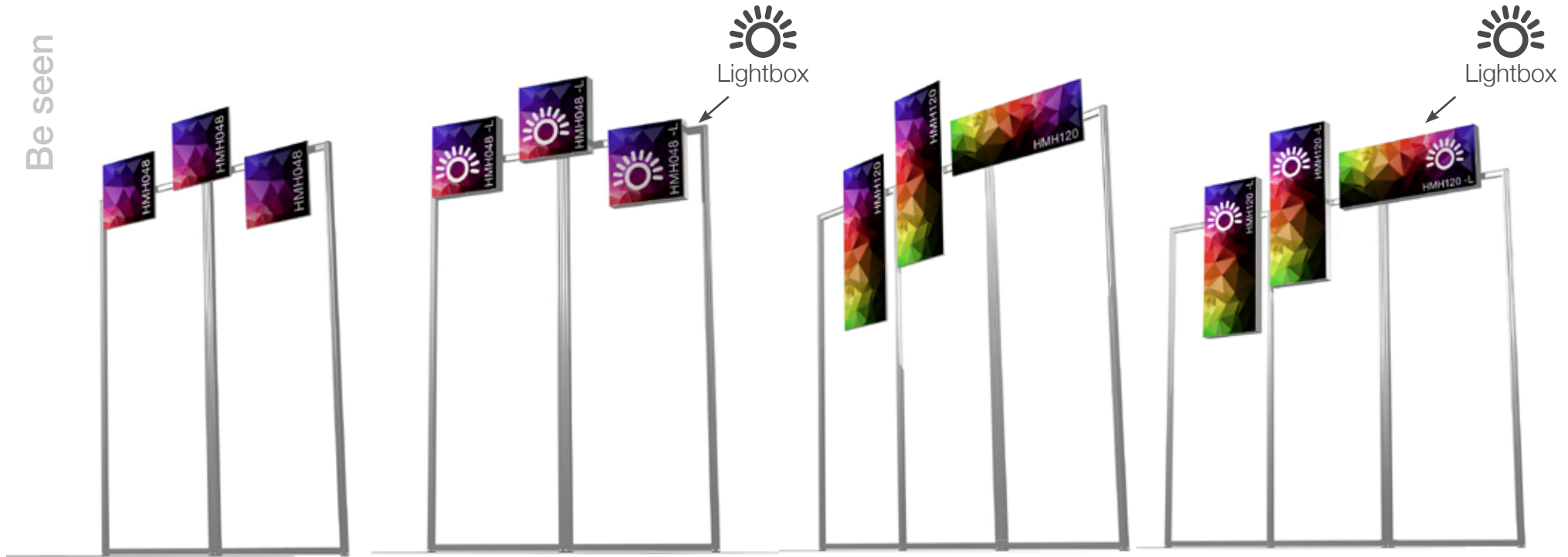
2 dye-sub graphics	100 €
--------------------	--------------

Be seen



- Think outside the frame!
- 2 dimensions: 480 x 480 mm or 480 x 1200 mm
- 3 pre-defined positions: low, middle, high
- Lightbox or non-lightbox
- Ships pre-assembled in the top case

Be seen



MODULES

HMH048Signage module S
+ dye-sub graphic

Purchase	205 €
Rental*	83 €

GRAPHICS

Dye-sub graphic	30 €
-----------------	-------------

Graphic dimensions

480 x 480 mm

HMH048-LLightbox signage module S
+ dye-sub graphic

Purchase	520 €
Rental*	177 €

Dye-sub graphic	30 €
-----------------	-------------

Graphic dimensions

480 x 480 mm

HMH120Signage module M
+ dye-sub graphic

Purchase	270 €
Rental*	123 €

Dye-sub graphic	60 €
-----------------	-------------

Graphic dimensions

480 x 1200 mm

HMH120-LLightbox signage module M
+ dye-sub graphic

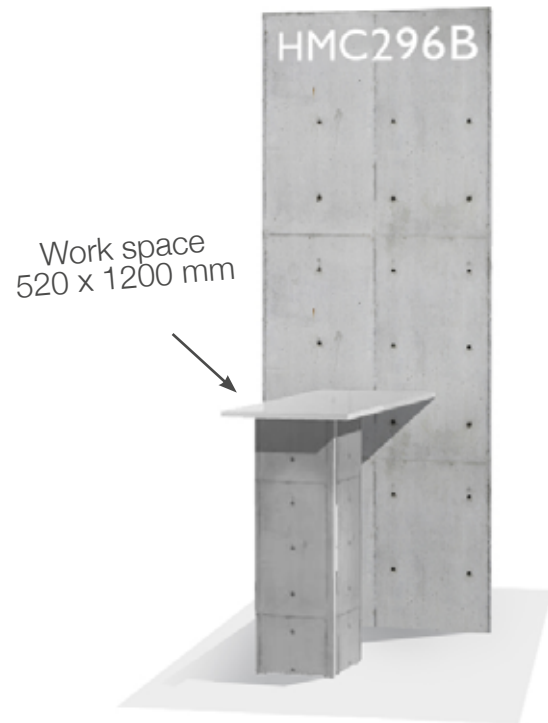
Purchase	750 €
Rental*	267 €

Dye-sub graphic	60 €
-----------------	-------------

Graphic dimensions

480 x 1200 mm

Console modules



HMC296B

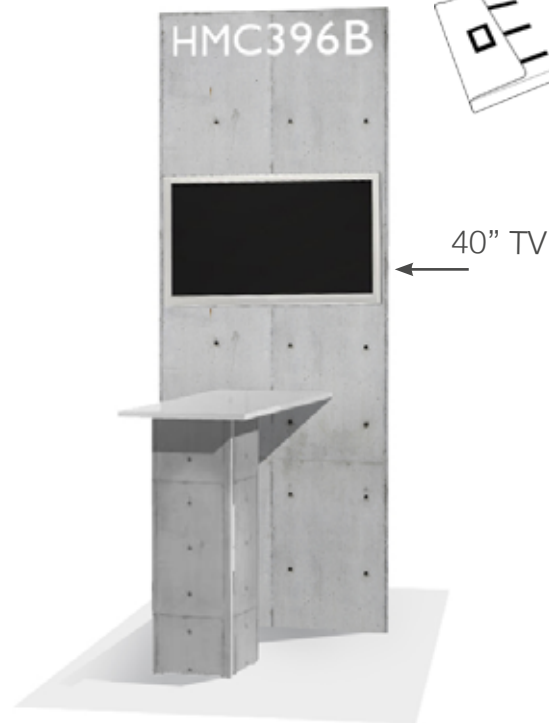
Console module + dye-sub graphics

Purchase **1 293€**
Rental* **566 €**

4 dye-sub graphics **255 €**

Total height (countertop incl.):
1000 mm

Countertop thickness: 38 mm



HMC396B

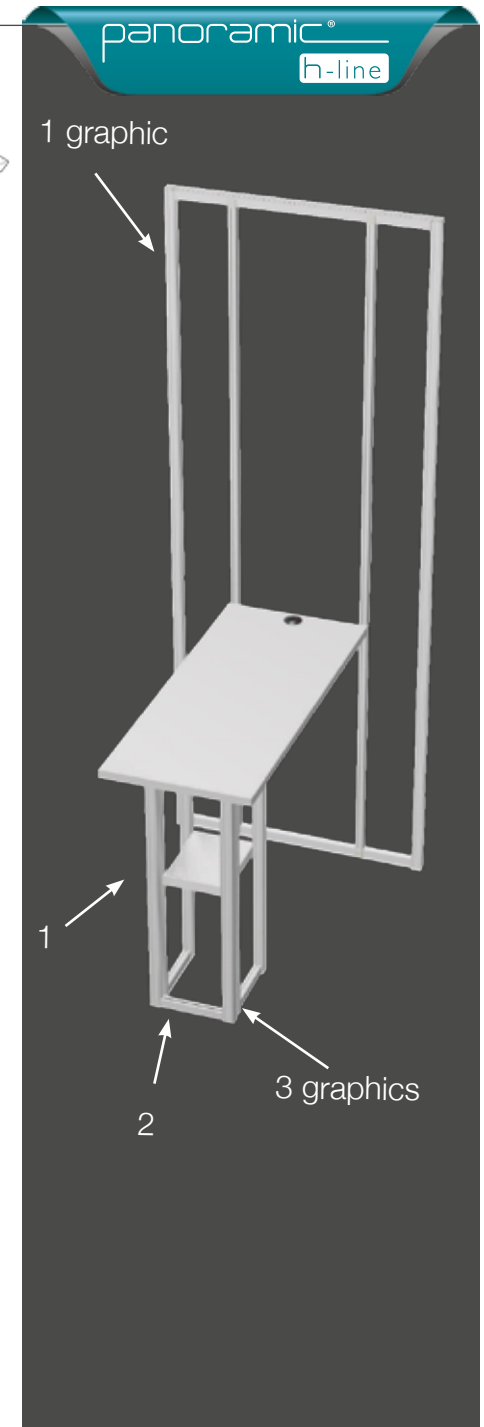
Console module with 40" TV** + dye-sub graphics

Purchase **1 398 €**
Rental* **598 €**

4 dye-sub graphics **255 €**

Total height (countertop incl.):
1000 mm

Countertop thickness: 38 mm



* Rental price includes custom-printed graphics.

**VESA monitor mount (200 x 200 / 400 x 400) with anti-theft security included in price. Recommended TV screen size: 40".
Weight: 15 kg max. Depth: 10 cm max. Optional TV not included in price.

USB console modules



HMC296B-USB

Console module + USB hub
+ dye-sub graphics

Purchase **1 393 €**
Rental* **596 €**

4 dye-sub graphics **255 €**

Total height (countertop incl.):
1000 mm

Countertop thickness : 38 mm



HMC396B-USB

Console module + TV monitor** + USB hub
+ dye-sub graphics

Purchase **1 498 €**
Rental* **628 €**

4 dye-sub graphics **255 €**

Total height (countertop incl.):
1000 mm

Countertop thickness : 38 mm



USB hub



MODULES

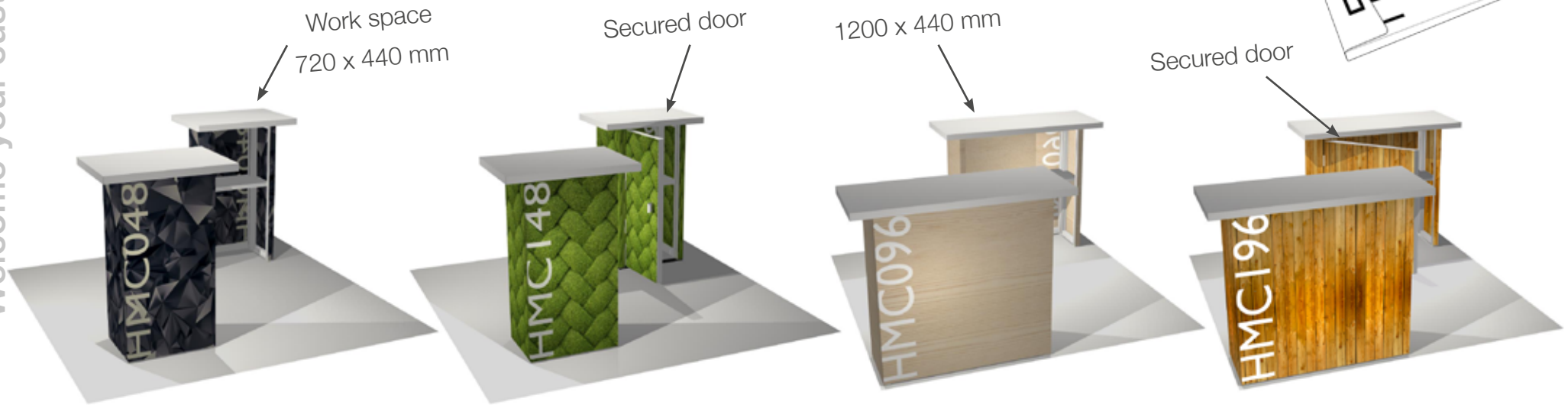
GRAPHICS

* Rental price includes custom-printed graphics.

**VESA monitor mount (200 x 200 / 400 x 400) with anti-theft security included in price. Recommended TV screen size: 40".
Weight: 15 kg max. Depth: 10 cm max. Optional TV not included in price.

Counter modules

Total height (countertop incl.): 1000 mm
Countertop thickness: 38 mm



GRAPHICS MODULES

HMC048

S Counter module
+ dye-sub graphics

Purchase **692 €**
Rental* **260 €**

3 dye-sub graphics **75 €**

HMC048-USB

Optional USB hub



Purchase **792 €**
Rental* **290 €**

HMC148

S Counter module with door
+ dye-sub graphics

Purchase **971 €**
Rental* **393 €**

6 dye-sub graphics **145 €**

HMC148-USB

Optional USB hub



Purchase **1 071 €**
Rental* **423 €**

HMC096

M Counter module
+ dye-sub graphics

Purchase **892 €**
Rental* **348 €**

3 dye-sub graphics **115 €**

HMC096-USB

Optional USB hub



Purchase **992 €**
Rental* **378 €**

HMC196

M Counter module with door
+ dye-sub graphics

Purchase **1 246 €**
Rental* **531 €**

6 dye-sub graphics **225 €**

HMC196-USB

Optional USB hub



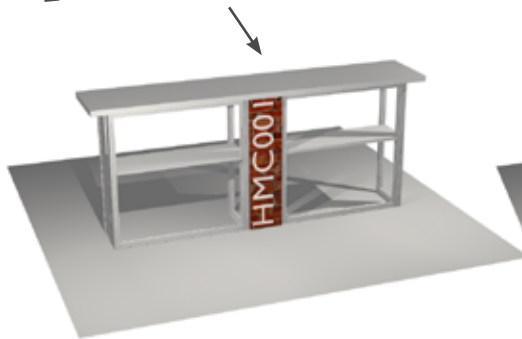
Purchase **1 346 €**
Rental* **561 €**

Connecting modules

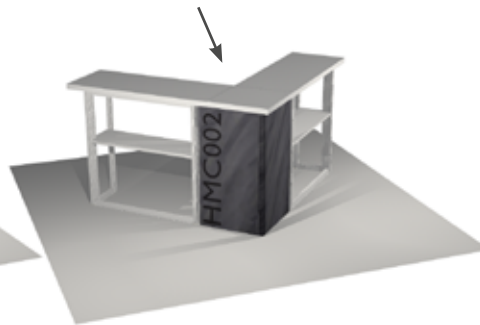
MODULAR SOLUTIONS

panoramic®
h-line

Work space
2400 x 440 mm
by connecting
2 HMC096 counters



Additional work space
440 x 440 mm



MODULES
GRAPHICS

HMC001

Connecting module to connect 2 counters (straight)
+ dye-sub graphic

Purchase **169 €**
Rental* **72 €**

Dye-sub graphic **30 €**

HMC002

Connecting module to connect 2 counters (angle)
+ dye-sub graphics

Purchase **562 €**
Rental* **235 €**

3 dye-sub graphics **95 €**

Lightbox counter modules

Work space
1200 x 490 mm



Cover to protect
countertop and shelf
Secured door



HMC096-L

M Counter module with front lightbox
+ dye-sub graphics

Purchase **1 471 €**
Rental* **522 €**

3 dye-sub graphics **115 €**

HMC096-L-USB

Optional USB hub

Purchase **1 571 €**
Rental* **552 €**



HMC196-L

M counter module with door and front
lightbox + dye-sub graphics

Purchase **1 825 €**
Rental* **7058 €**

6 dye-sub graphics **225 €**

HMC196-L-USB

Optional USB hub

Purchase **1 925 €**
Rental* **735 €**



* Rental price includes custom-printed graphics.

Lightbox ships with standard connectors. To connect two lightboxes, lightbox connectors must be ordered.
Power supply bracket not included. An interior shelf is included in every counter.

Configurations

- Modular stands that are ideal for 9 to 36 m² floor space
- Packaged in a wheeled crate with frames and graphics preassembled
- May be set up with or without professional assistance



modular



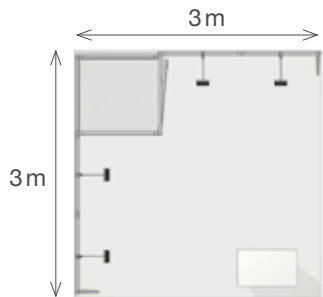
rental

Visit panoramic-h-line.com





9 m²



stand height: 2.5 m



HMC048 counter
(optional)



1 m² equipped storage module
HMR096



Scalable to
12 m²

Add a TV console module

hm-stand-30

Modules (structure + graphics)
+ LED spotlights + Packaging

Purchase* **6 097 €**

Rental* **3 093 €**

*excludes counter, printed carpet, furniture and multimedia

Travel Solution
1 h-line H2 crate



hm-stand-31

Modules (structure + graphics)
+ LED spotlights + Packaging

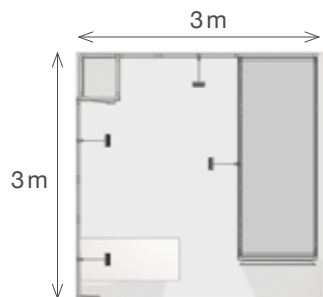
Purchase* **8 680 €**

Rental* **4 193 €**

*excludes printed carpet, TV and furniture

Travel Solution
1 h-line H2 crate

9 m²



stand height: 2.5 m



equipped storage module
HMR048



console module HMC296B



Scalable to
12 m²

Add just a standard 96 module



3 brochure-
holders integrated
into module

hm-stand-32

Modules (structure + graphics)
+ LED spotlights + Packaging

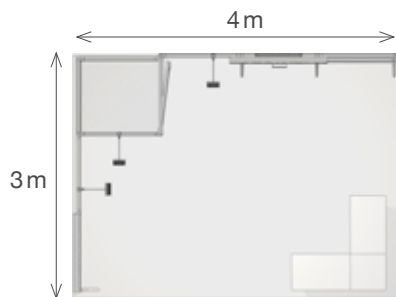
Purchase* **7 998 €**

Rental* **3 800 €**

*excludes counters, TV, signage module, printed carpet
and furniture

Travel Solution

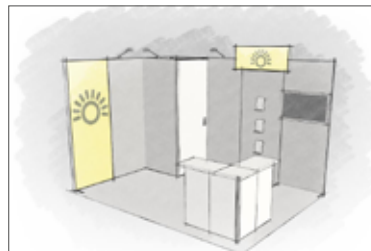
1 h-line H2 crate



stand height: 2.5 m



2 counters connected with a corner
connection module HMC002 (optional)



Scalable to
9m²



Just remove the standard lightbox 96 module

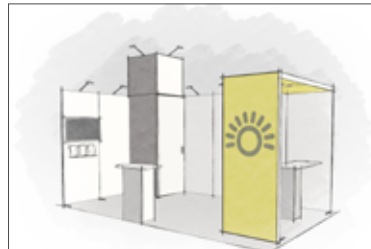
Header
module100%
lighted arch15 m²

5m

3m



stand height: 3.5 m

USB hub included in console
countertopScalable to
12 m²**hm-stand-33**Modules (structure + graphics)
+ LED spotlights + PackagingPurchase* **13 896 €**Rental* **6 368 €**

*excludes counter, multimedia, printed carpet and furniture

Travel Solution1 h-line H2 crate
+ 1 h-line H4 crateReconfigure your stand by removing
one standard 96 module

3 brochure holders
+ 1 shelf
on the same module!

hm-stand-34

Modules (structure + graphics)
+ LED spotlights + Packaging

Purchase* **9 560 €**

Rental* **4 654 €**

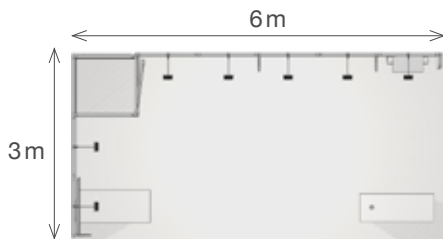
*excludes counter, TV, printed carpet and furniture

Travel Solution

1 h-line H1 crate



18m²



stand height: 2.5 m



HME017: shelf module with 3
brochure holders



console module HMC396B

Scalable to
12m²



With one panel reversed and two modules removed

18m²

stand height: 2.5 m

accessories attached with
universal attachment piece

wall-frame module HMF196

hm-stand-35

Modules (structure + graphics)
+ LED spotlights + Packaging

Purchase* **13 707 €**

Rental* **6 633 €**

*excludes counter, lightbox signage, display case, multimedia,
printed carpet and furniture

Travel Solution

1 h-line H2 crate

+ 1 h-line H4 crate with wrap



Scalable to
12m²

Adapt your stand to a 12 m² space by removing three
standard 96 modules and two standard 48 modules

Brochure holders
integrated into
module

Lightbox velum
included in arch
module

hm-stand-36

Modules (structure + graphics)
+ LED spotlights + Packaging

Purchase* **17 948 €**

Rental* **8 426 €**

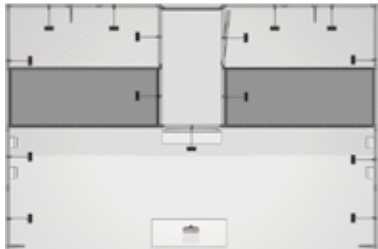
*excludes counter, multimedia, printed carpet and furniture

Travel Solution
2 h-line H1 crates

24 m²

6m

4m



stand height: 3.5m

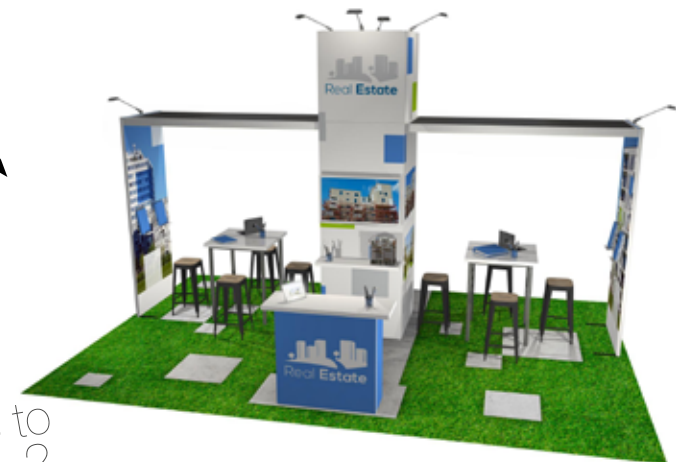


TV + shelving module HMM296A

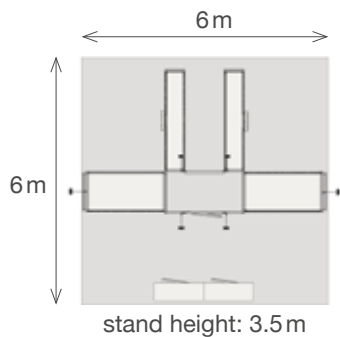


tablet holder (optional)

Scalable to
24 m²
island stand



A very different design in the same space!

Lightbox signage
(optional)2 connected
counters
(optional)**hm-stand-37**Modules (structure + graphics)
+ LED spotlights + PackagingPurchase* **16 324 €**Rental* **7 582 €***excludes counters, lightbox signages, multimedia,
printed carpet and furniture**Travel Solution**1 h-line H2 crate
+ 1 h-line H4 crate36 m²

secure tablet holder



Rear view of stand

Scalable to
24 m²

Take out certain modules and adapt to a smaller space!

Pre-fit your modules!

Accessory
module
compatibleTV40L (-LOC)
TV Samsung LED 3D 40"
+ remote controlPurchase: **1 075 €**
Rental: **323 €**Accessory
module
compatibleACS011-01
TV holderPurchase: **105 €**Accessory
module
compatibleACS012-01
Tablet holderPurchase: **105 €**Accessory
module
compatibleCOF071-01
Brochure holderPurchase: **60 €**Accessory
module
compatibleACT028-12
Shelf 480mm x 260 mm
+ 2 attachment piecesPurchase: **55 €**Accessory
module
compatibleACT028-13
Shelf 520 x 260 mm
+ 2 attachment piecesPurchase: **70 €**Accessory
module
compatibleACT028-11
Shelf 960 x 260 mm
+ 2 attachment piecesPurchase: **95 €**Covers to protect
countertops
and shelves

Pre-fit your modules!

panoramic®
h-line

COL037
h-line connector

Purchase: **9 €**



COL032-01
Lightbox connector

Purchase: **22 €**



COF065-01
Power supply bracket for lightbox
and power strip

Purchase: **22 €**



HAL001
Electricity kit
(2 3m extension cords + 1 3-outlet power strip)

Purchase: **40 €**



HAL003
Electricity kit with attachment piece
(2 3m extension cords + 1 3-outlet power
strip + power supply bracket for lightbox and
power strip)

Purchase: **62 €**



LED3-EU-S3
LED light with bag

Purchase: **80 €**
Rental: **24 €**



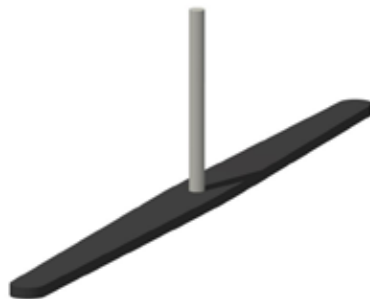
ACP022

Stabilizing foot

Purchase: **42 €**

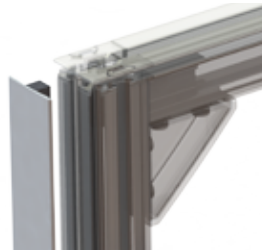
ACP023

Double-sided stabilizing foot

Purchase: **70 €**

ALP005-01

Aluminum profile cover (height 250 cm)

Purchase: **22 €**

ALP005-02

Aluminum profile cover (height 96 cm)

Purchase: **9 €**

HAR001

Storage kit

(free-standing shelves, coat rack
+ 4 hangers and 2 trash bins)Purchase: **125 €**

HAR002

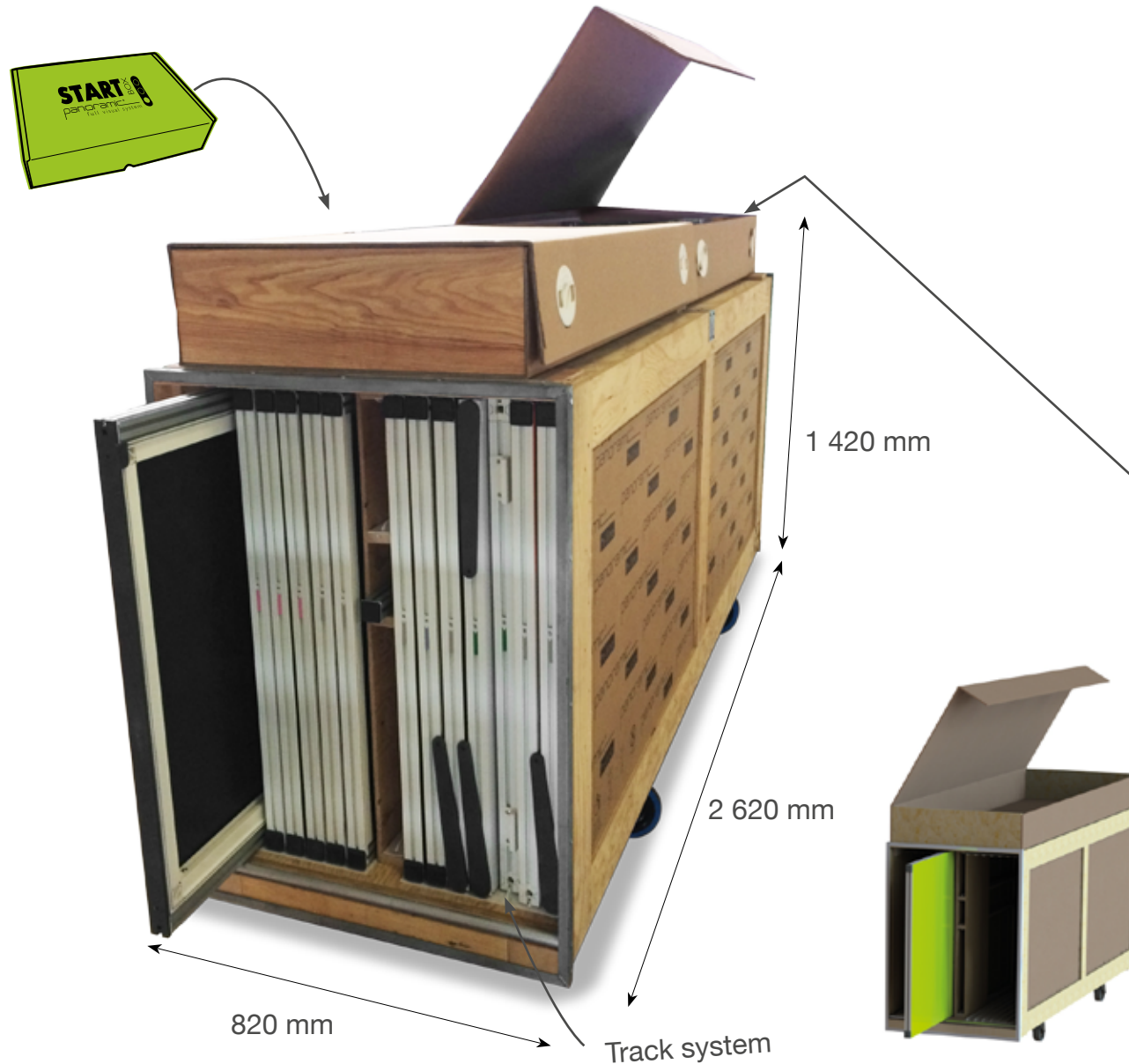
Closet kit

(rod and 4 hangers + 1 trash bin)

Purchase: **75 €**

Travel solution

Storage case



panoramic®
h-line








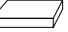









H1 Storage crate

Purchase **990 €**Rental **297 €**

External dimensions:
L 820 x D 2620 x H 1420 mm

Weight:
149 kg

Can contain (14) 96 cm frames, (1) 48 cm frame and (1) 24 cm frame.
For use with liftgate or ramp.
Includes a top case.

CONNECTOR			
ACCESSORIES	Connection tube 	Profile cover 	
	Shelf support 	Counter platform 	Counter shelf 
		Console platform 	Shelf 
	Stepladder 	TV/ 	iPad 
STORAGE FURNISHINGS	LED display light 	Extension cord 	Power strip 
	Hanging rod 	Shelf 	Trash bin 



H2 Storage crate

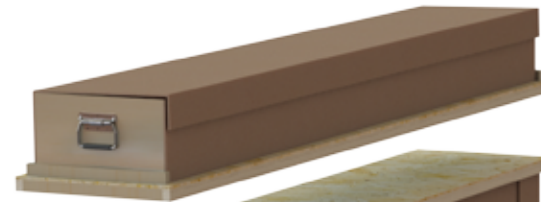
Purchase **990 €**
Rental **297 €**

External dimensions:
L 740 x D 2620 x H 1440 mm

Weight:
110 kg

Can contain 12 frames.
For use without liftgate or ramp (case to be loaded wheels up in your vehicle to ensure perfect stability during transport) Includes a top case.

Top case
(optional)



Sectional case



H4 Additional storage crate

Purchase **790 €**
Rental **237 €**

External dimensions:
L 520 x D 2650 x H 1220 mm

Weight:
80 kg

Can contain 8 frames.
For use without liftgate or ramp.
Top case optional.

EMC041-02

Top case for H4 storage crate

Purchase **150 €**



Stand database



Even more booths on:
panoramic-display.com

