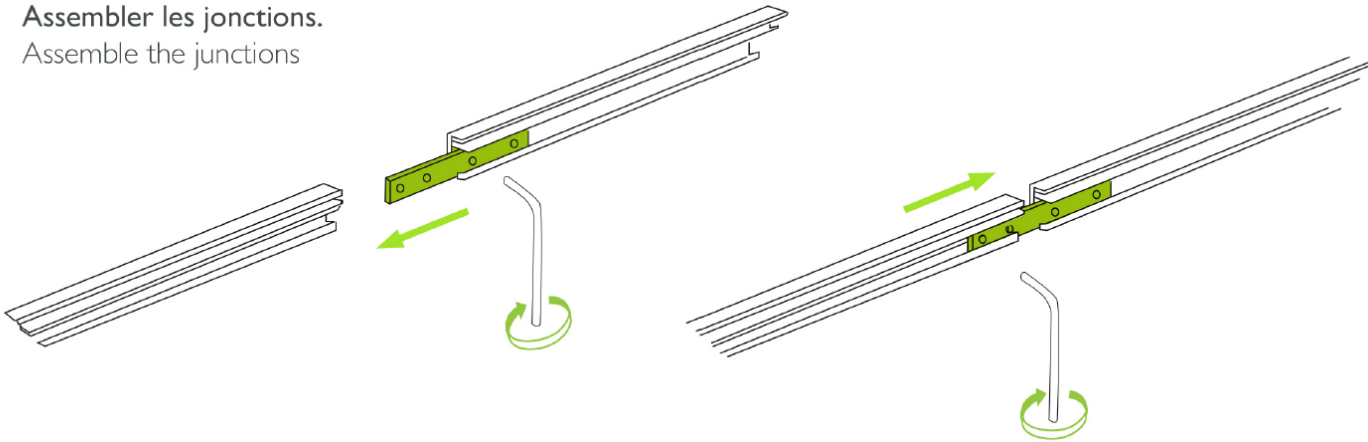


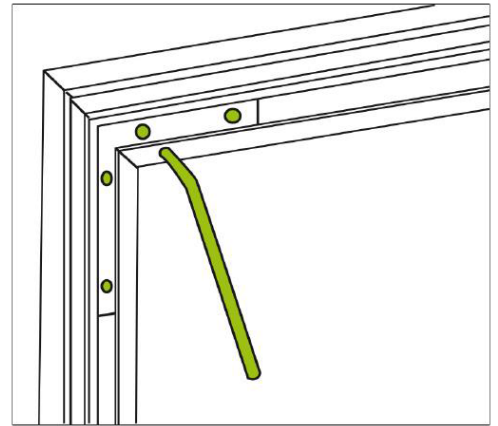
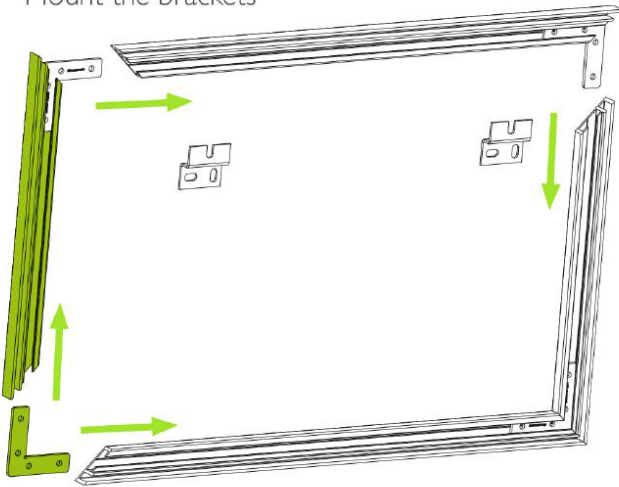
# wall.frame classic

NOTICE DE MONTAGE - SET UP INSTRUCTIONS

- 1** Assembler les jonctions.  
Assemble the junctions

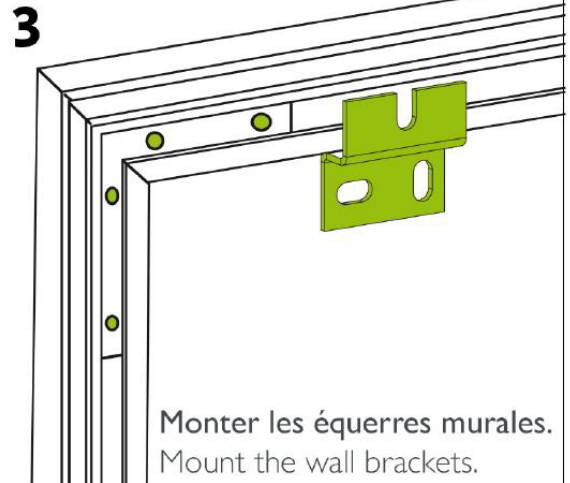
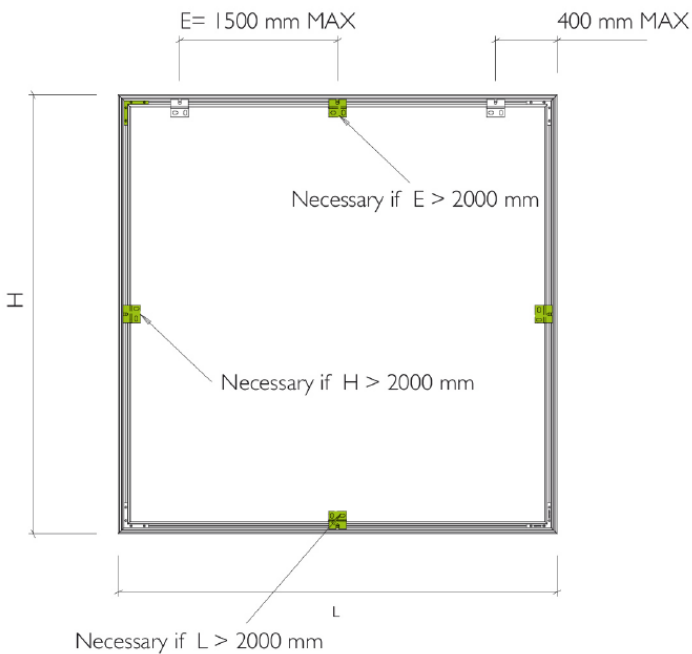


- 2** Monter les équerres.  
Mount the brackets



Terminer le montage d'un côté du cadre en fixant les 2 équerres.

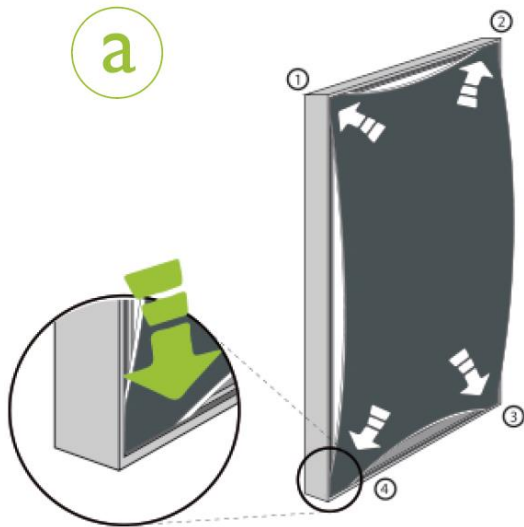
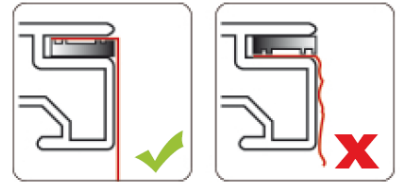
Finish the assembly of the frame on one side by fixing the 2 brackets.



Les chevilles ne sont pas fournies, choisissez des chevilles adaptées à votre mur.

The wall screws are not included. Choose the screw best adapted to the wall type.

## NOTICE DE MONTAGE - SET UP INSTRUCTIONS

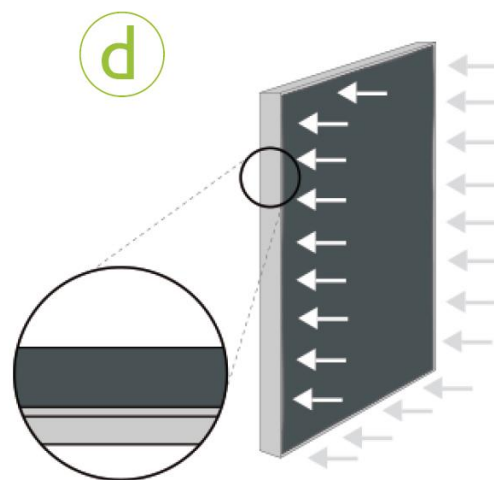
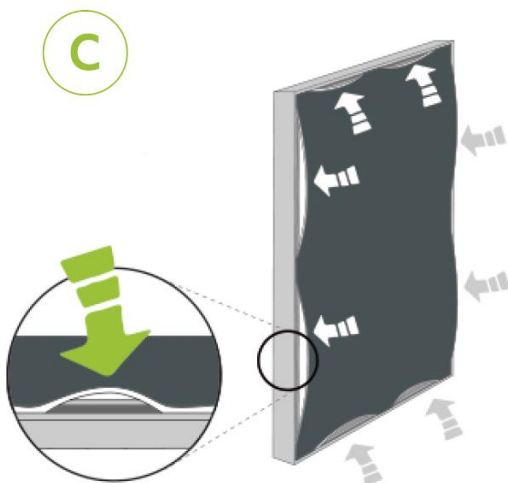
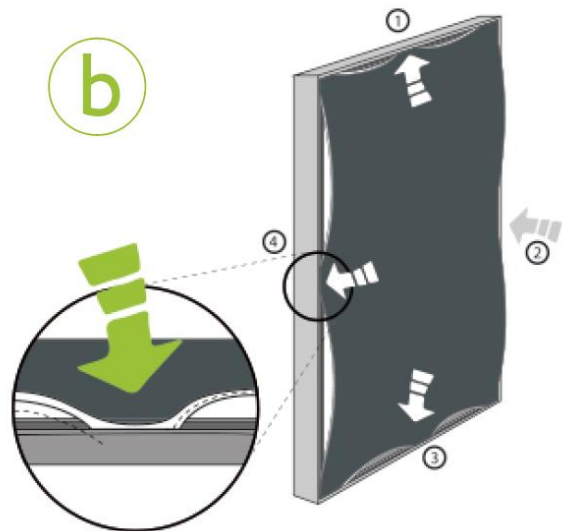


**Commencez par les 4 angles**

Position the graphic in the 4 corners of the frame by pushing the silicon edging into the groove

**Insérer le joint au milieu du cadre**

Position the graphic edging in the middle of each side of the frame



Puis se diriger vers les extrémités par petits appuis.

Ne pas faire glisser les doigts sur le visuel.

Work outwards towards the corners while continuing to press downwards on to the edging.

To avoid stretching, creasing at the edges and dirtying of the graphic, do not wipe your hands across image.