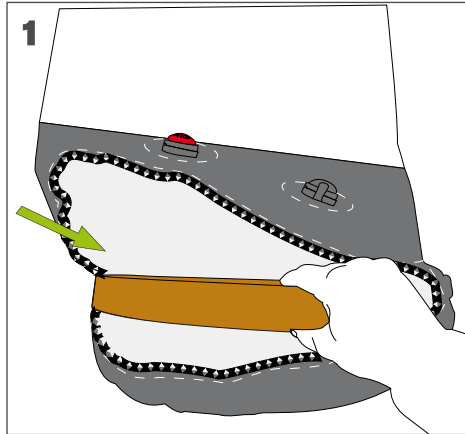
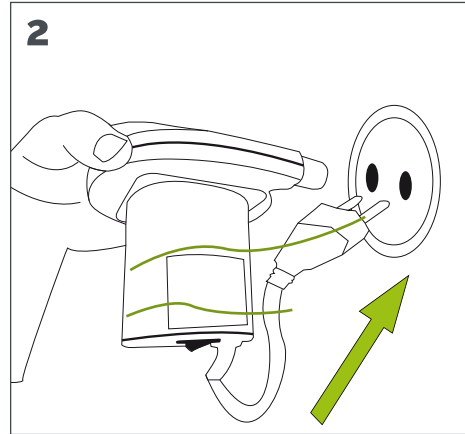


totem.air

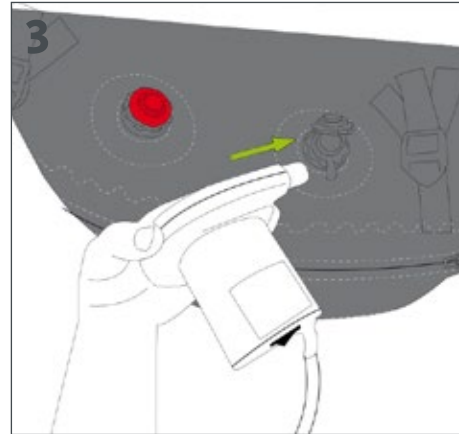
SET UP INSTRUCTIONS



Unroll the totem.air, open the zippered portion on bottom of unit and insert the steel or wooden base. Zip to close.



The unit can be inflated using an electric pump (optional accessory from duo) or a manual pump (available in sporting goods stores).



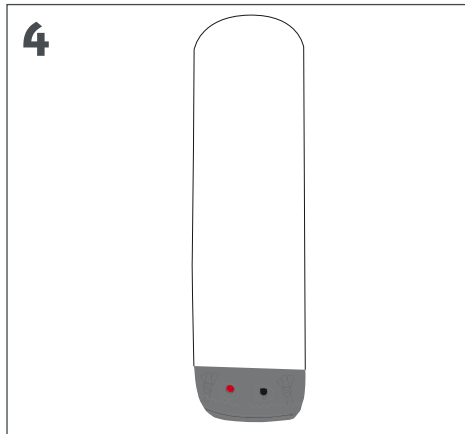
Unscrew the ring on the black air valve. Insert the tip of the pump to inflate the totem.air. The red valve is a security valve.

Contents :

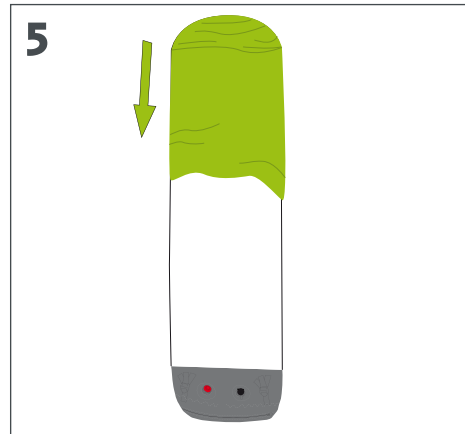
- . totem.air
- . Fabric "sock-style" graphic
- . Wood base
- . Transport bag

Option :

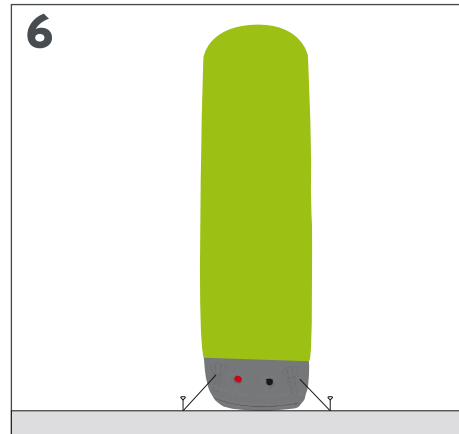
- . Electric inflation pump
- *Anchoring kits (top or bottom)



Once the totem.air is inflated, close the two valves.



Position the graphic from the top, pulling down to cover the full length of the totem.



In case of high winds, we strongly suggest that you anchor* your totem.air from the bottom with ground stakes.

