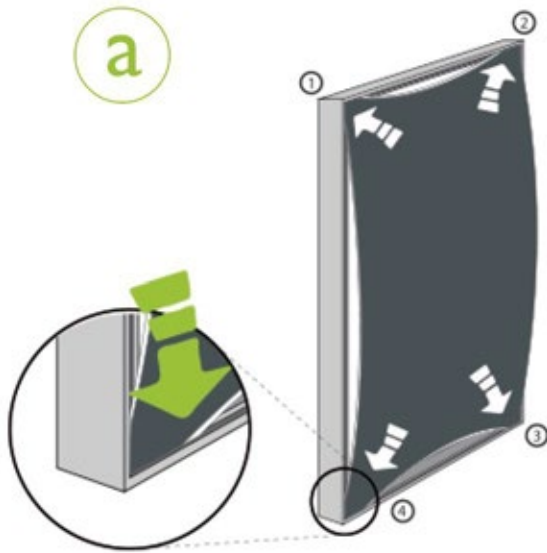
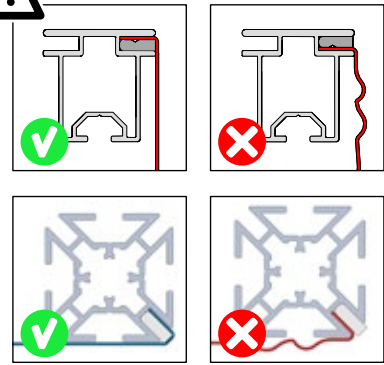
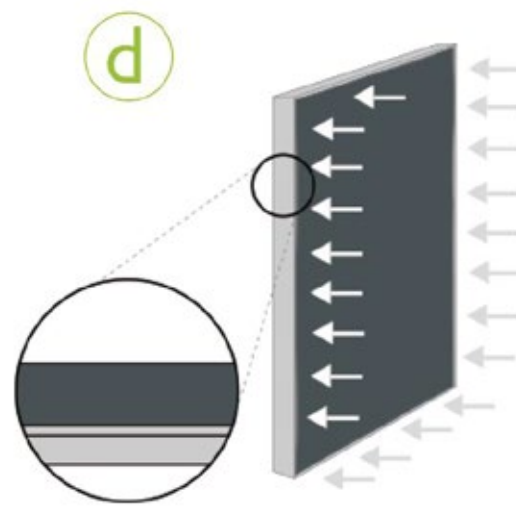
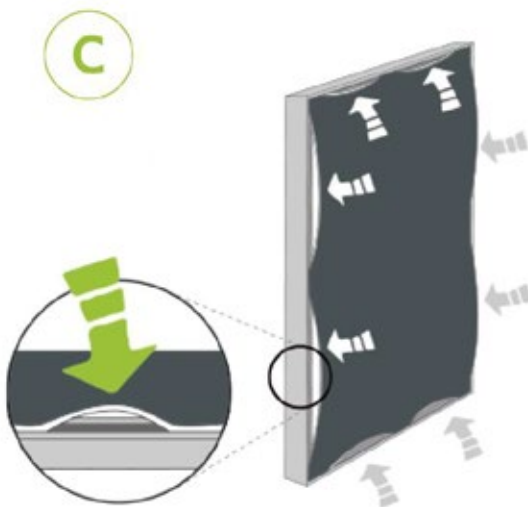
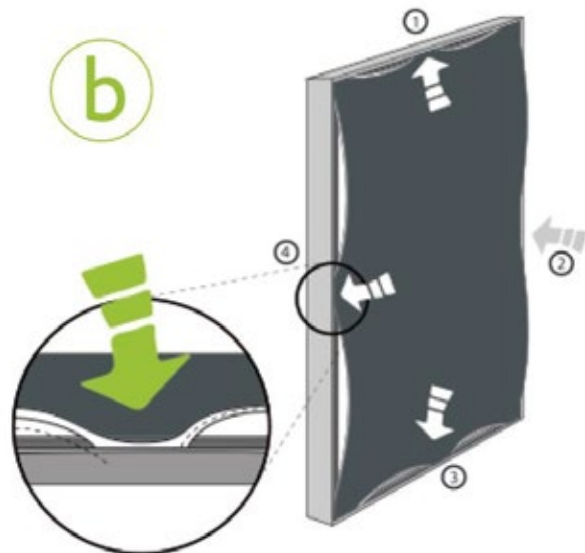


SET UP INSTRUCTIONS



Position the graphic in the 4 corners of the frame by pushing the silicon edging into the groove

Position the graphic edging in the middle of each side of the frame



Work outwards towards the corners while continuing to press downwards on to the edging. To avoid stretching, creasing at the edges and dirtying of the graphic, do not wipe your hands across image.